

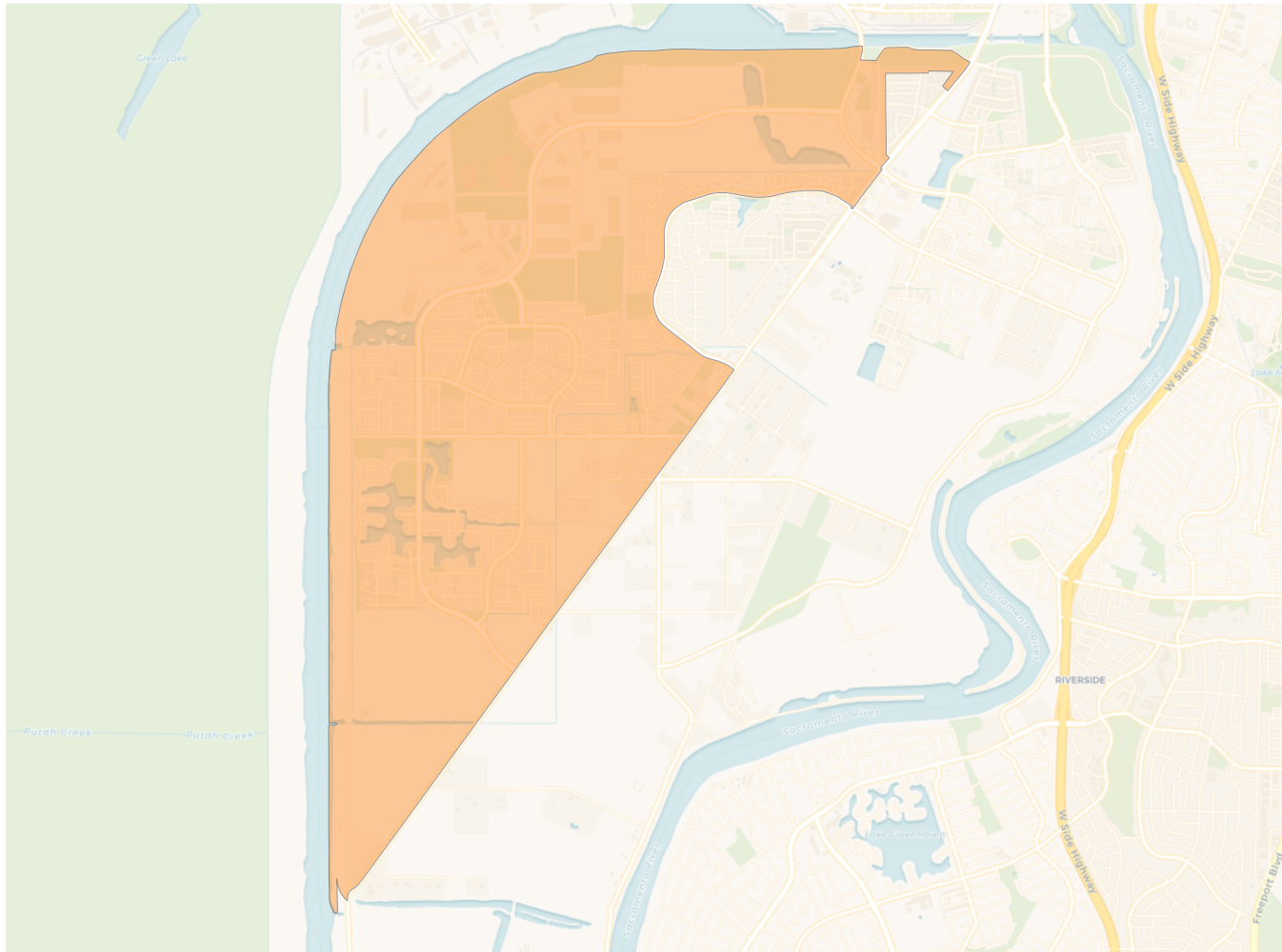
## 2020 Census

	1	2	3	4
Population	12,920	13,468	13,774	13,915
Deviation	-599	-51	255	396
Deviation %	-4.4%	-0.4%	1.9%	2.9%
Other	6,771	7,642	6,336	6,337
Other %	52.4%	56.7%	46.0%	45.5%
Latino	2,920	2,862	5,830	5,712
Latino %	22.6%	21.3%	42.3%	41.0%
Asian	2,446	2,475	986	1,237
Asian %	18.9%	18.4%	7.2%	8.9%
Black	783	489	622	629
Black %	6.1%	3.6%	4.5%	4.5%

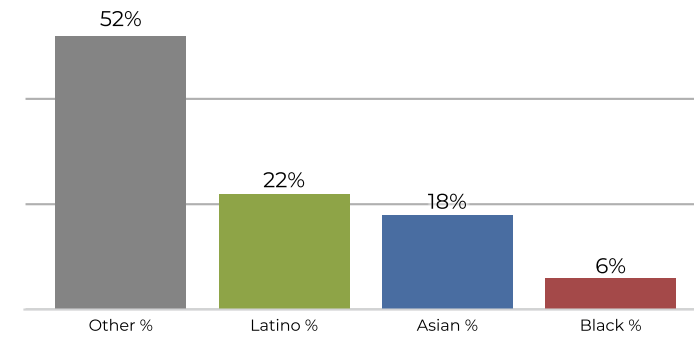
## Citizen Voting Age Population (CVAP)

	1	2	3	4
Total CVAP	8,527	8,819	8,110	8,088
Other CVAP	5,198	6,190	4,755	4,506
Other CVAP %	61.0%	70.2%	58.6%	55.7%
Latino CVAP	1,524	1,035	2,363	2,223
Latino CVAP %	17.9%	11.7%	29.1%	27.5%
Asian CVAP	1,168	1,373	491	648
Asian CVAP %	13.7%	15.6%	6.1%	8.0%
Black CVAP	637	221	501	711
Black CVAP %	7.5%	2.5%	6.2%	8.8%

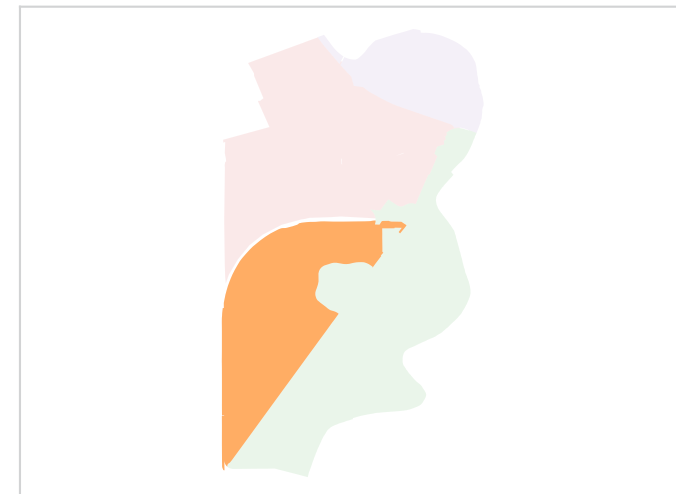
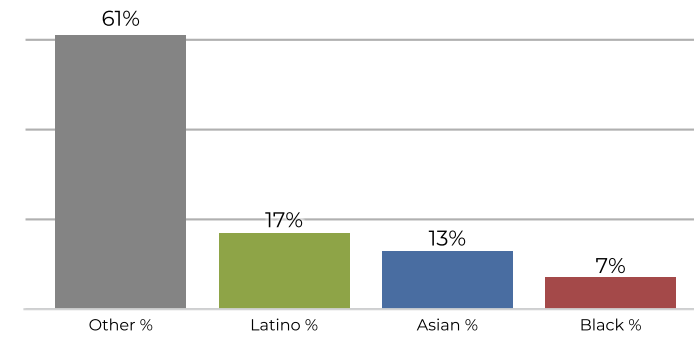
**District 1**



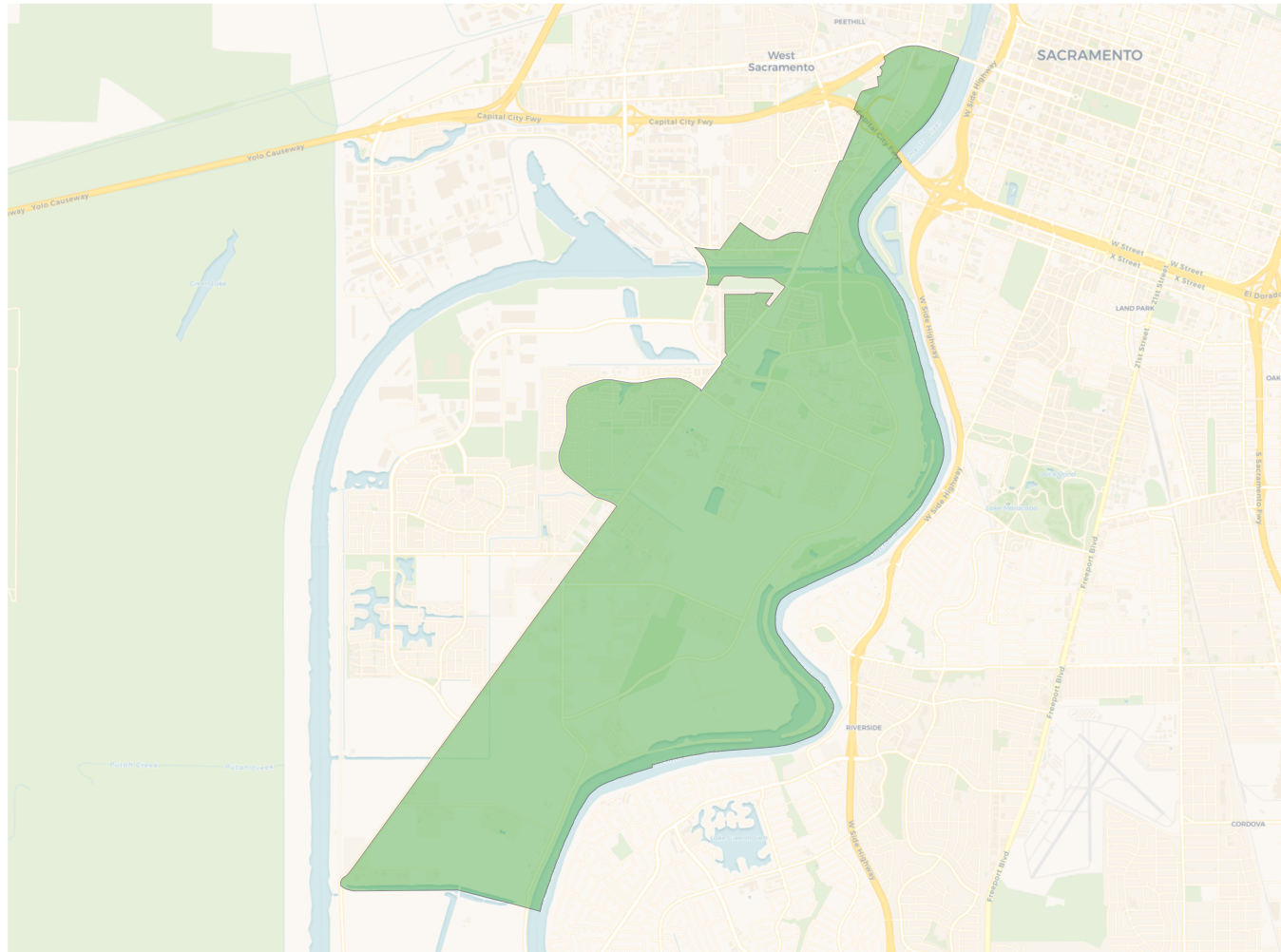
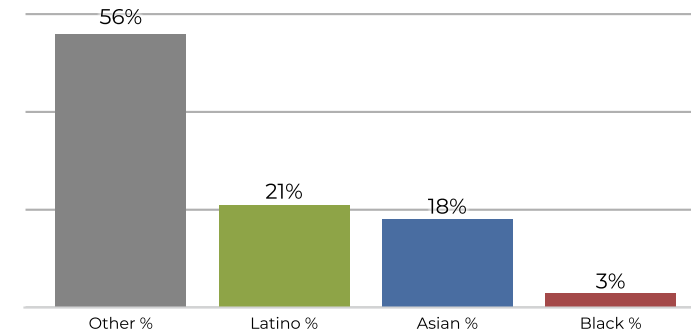
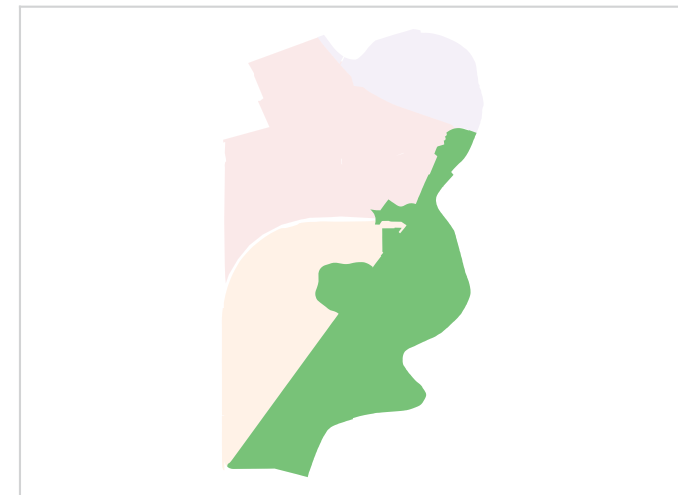
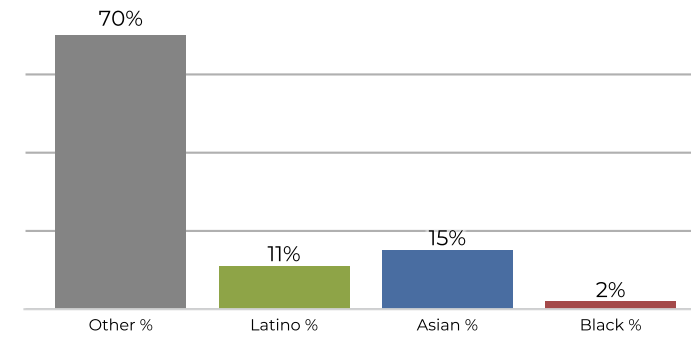
**2020 Census**



**Citizen Voting Age Population**

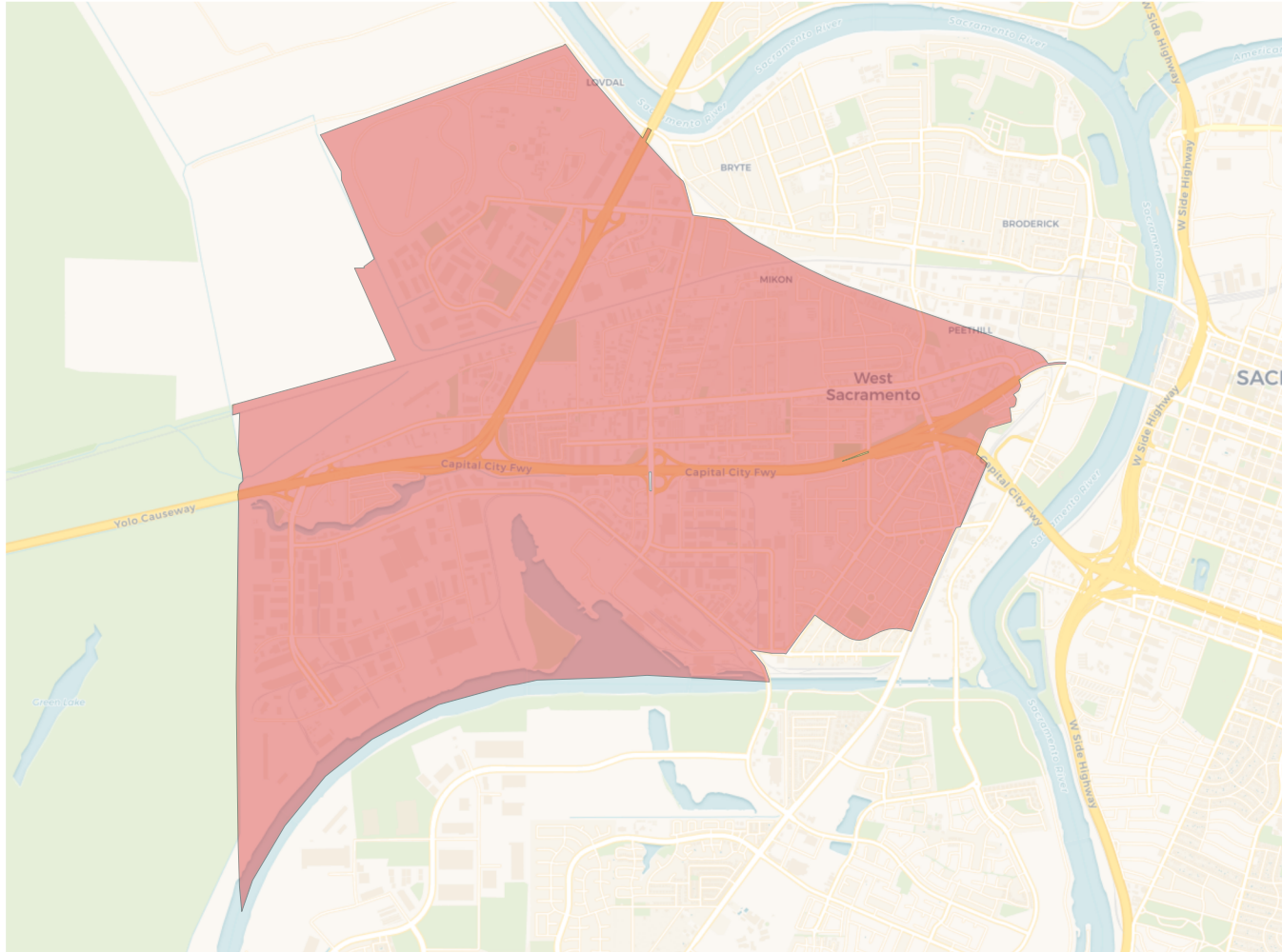


Population	Deviation	Deviation %	Other	Other %	Latino	Latino %	Asian	Asian %	Black	Black %
12,920	-599	-4.4%	6,771	52.4%	2,920	22.6%	2,446	18.9%	783	6.1%
Total CVAP	Other CVAP	Other CVAP %	Latino CVAP	Latino CVAP %	Asian CVAP	Asian CVAP %	Black CVAP	Black CVAP %		
8,527	5,198	61.0%	1,524	17.9%	1,168	13.7%	637	7.5%		

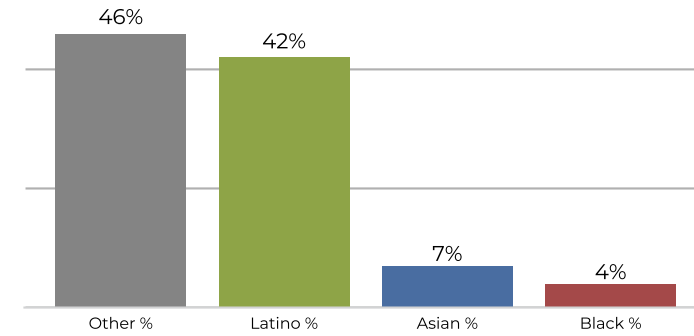
**District 2**

**2020 Census**

**Citizen Voting Age Population**


Population	Deviation	Deviation %	Other	Other %	Latino	Latino %	Asian	Asian %	Black	Black %
13,468	-51	-0.4%	7,642	56.7%	2,862	21.3%	2,475	18.4%	489	3.6%
Total CVAP	Other CVAP	Other CVAP %	Latino CVAP	Latino CVAP %	Asian CVAP	Asian CVAP %	Black CVAP	Black CVAP %		
8,819	6,190	70.2%	1,035	11.7%	1,373	15.6%	221	2.5%		

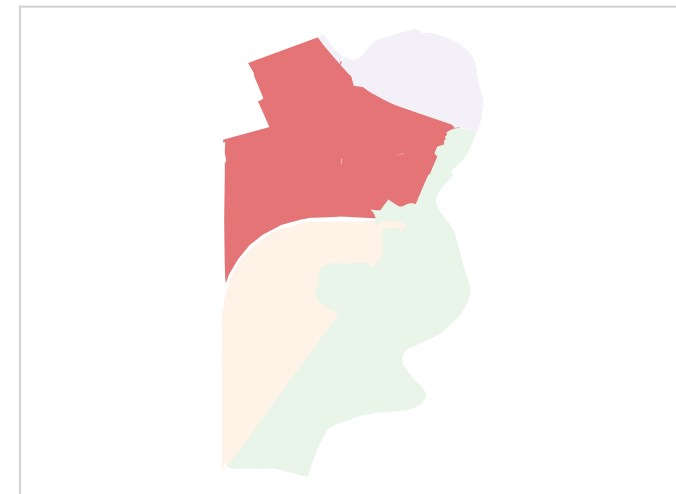
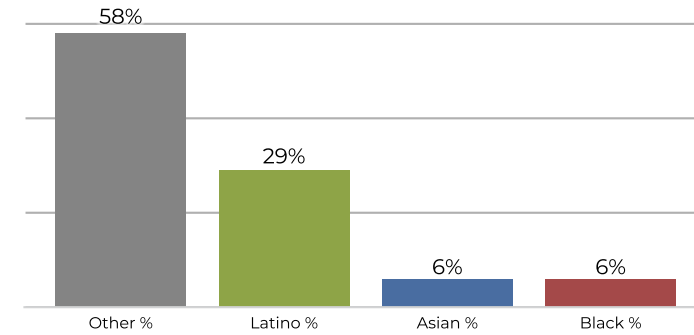
**District 3**



**2020 Census**

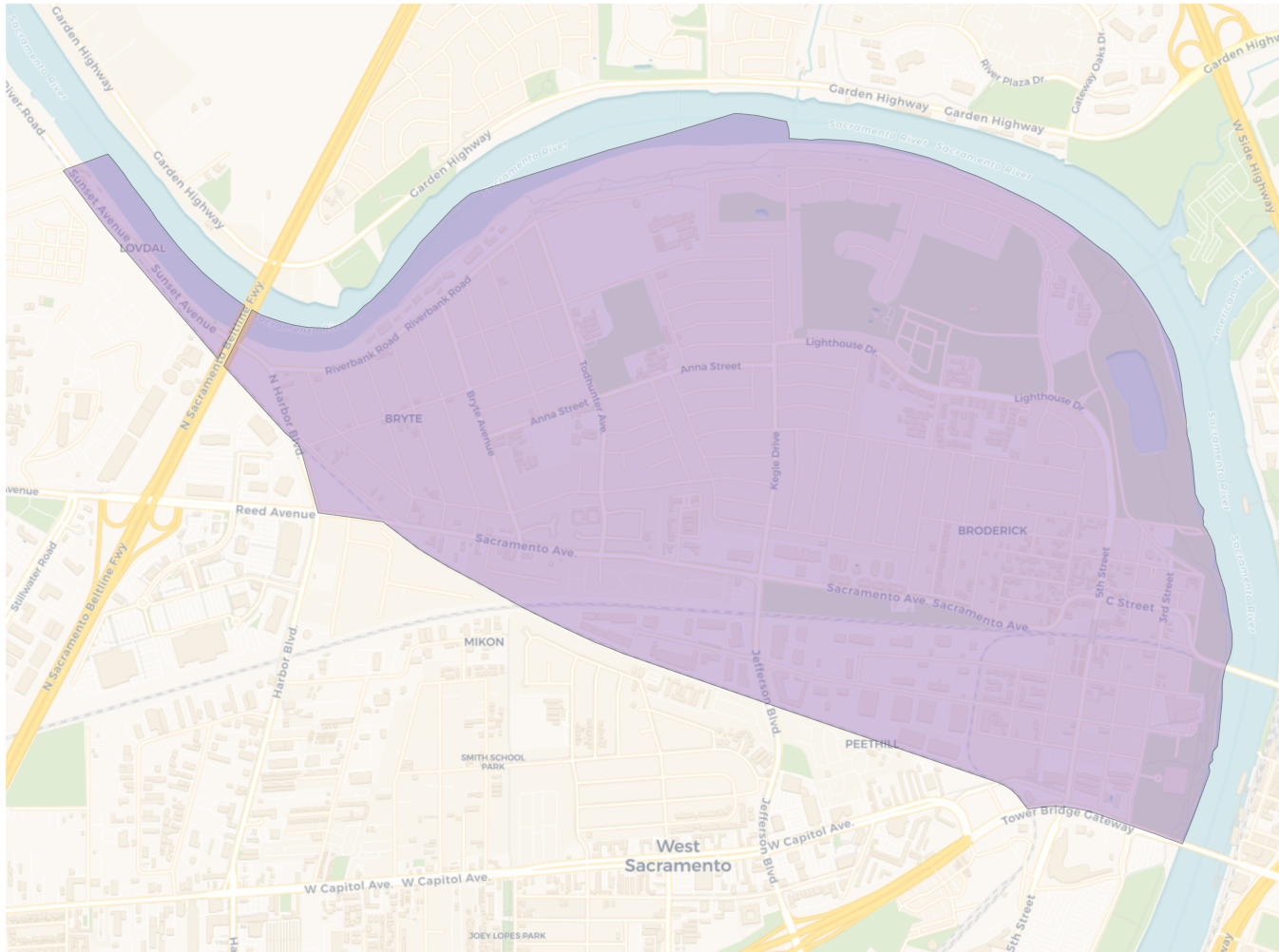


**Citizen Voting Age Population**

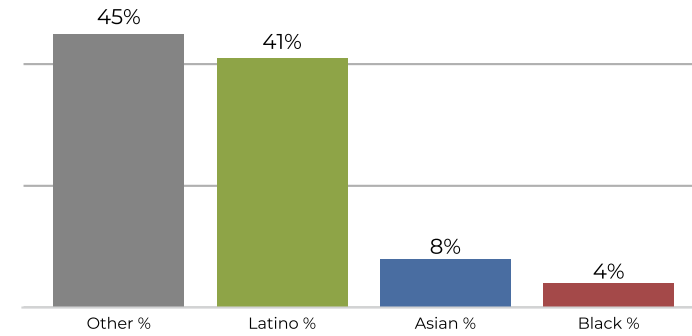


Population	Deviation	Deviation %	Other	Other %	Latino	Latino %	Asian	Asian %	Black	Black %
13,774	255	1.9%	6,336	46.0%	5,830	42.3%	986	7.2%	622	4.5%
Total CVAP	Other CVAP	Other CVAP %	Latino CVAP	Latino CVAP %	Asian CVAP	Asian CVAP %	Black CVAP	Black CVAP %		
8,110	4,755	58.6%	2,363	29.1%	491	6.1%	501	6.2%		

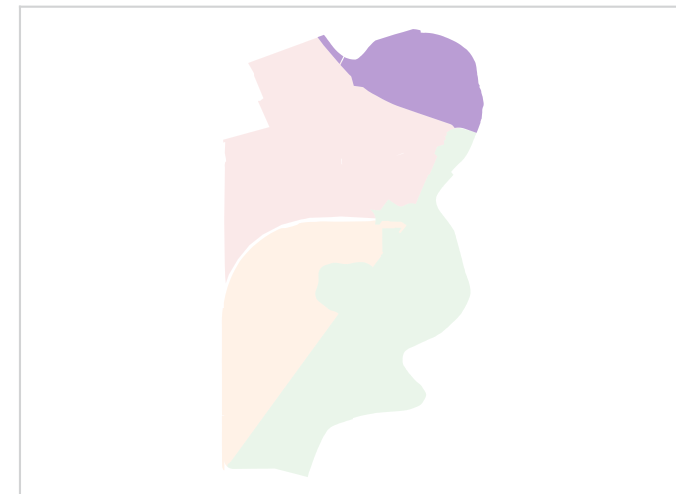
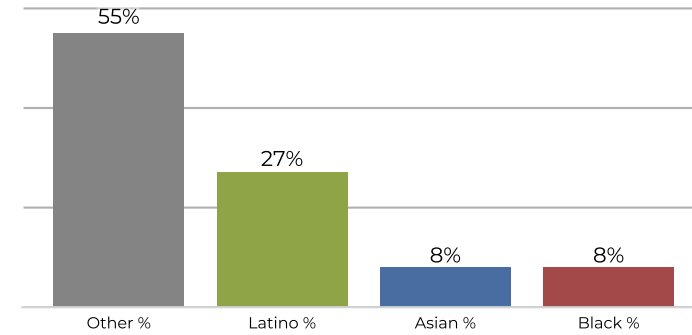
**District 4**



**2020 Census**



**Citizen Voting Age Population**



Population	Deviation	Deviation %	Other	Other %	Latino	Latino %	Asian	Asian %	Black	Black %
13,915	396	2.9%	6,337	45.5%	5,712	41.0%	1,237	8.9%	629	4.5%
Total CVAP	Other CVAP	Other CVAP %	Latino CVAP	Latino CVAP %	Asian CVAP	Asian CVAP %	Black CVAP	Black CVAP %		
8,088	4,506	55.7%	2,223	27.5%	648	8.0%	711	8.8%		